



Place one long panel and the back panel together. Install a bolt and thumb screw in the top hole.



Install the second long panel in the same manner and slide the floor into place.



Install front panel, then install the rest of the bolts and thumb screws



The firebox can be installed at this stage or later on.



The inducer sleeve can now be installed snugly into the firebox. Before it is installed into the cooker or afterward. (see step 6)



Screwing the inducer sleeve through the cooker wall into the firebox.

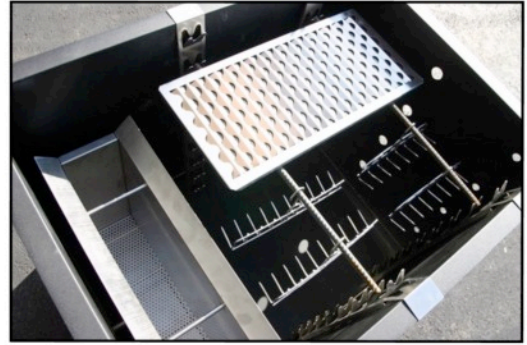
Caldera Del Fuego Set-up Instructions

7.



Install the rack hangers, shelves, meat hangers and drip pans.

8.



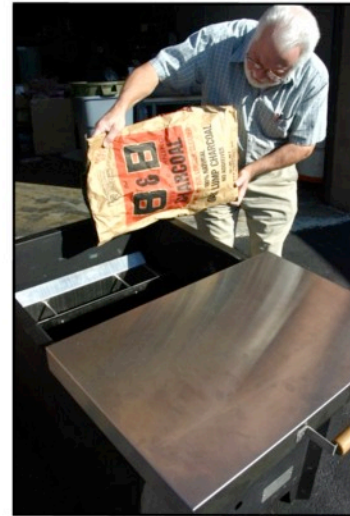
This view shows how the cooking chamber can be flexed with shelves as well as rack hangers at different levels.

9.



Install the tilt-in convection fan by turning the 1/4 turn knob until fan is locked in place.

10.



Load the firebox with good quality charcoal.

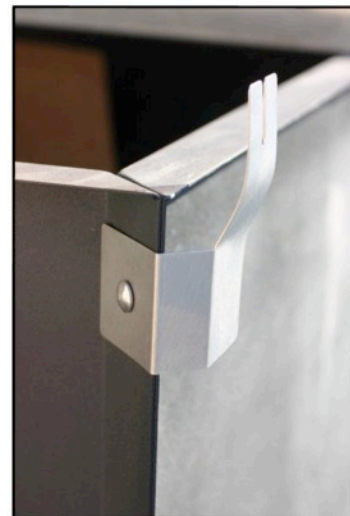
11.



Light the Guru charcoal lighter (holes upward) and place it all the way into the inducer sleeve.

In just a few minutes, you will have a strong fire going and you can install your power draft fan to start cooking.

12.



Install the mounting bracket in the front top right hole with the thumb screw.

(see: "Attaching your Guru Control Mount To The Caldera")

13.



Install the control, run the wires and install the power draft blower into the inducer sleeve.

14.



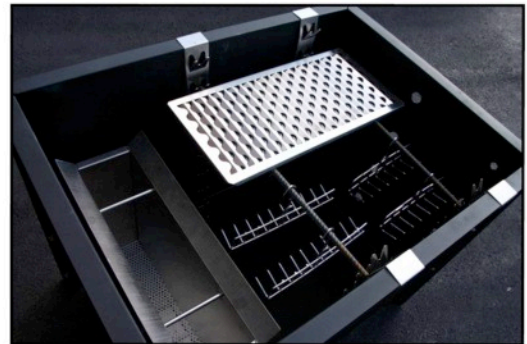
After cooking, use gloves to remove and dump the firebox for quick egress.

15.



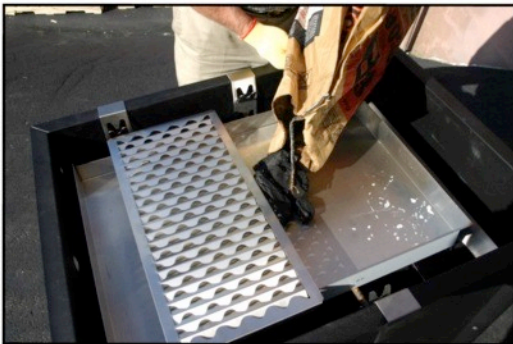
Showing meat racks.

16.

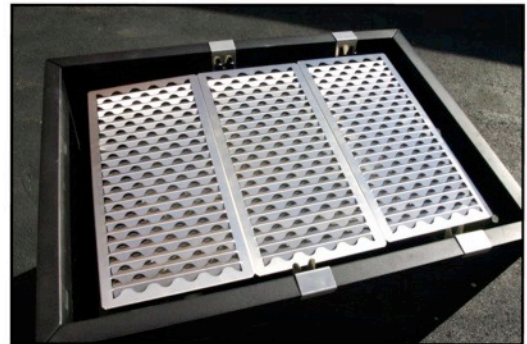


Showing meat hangers and racks.

17.



Using Optional charcoal grilling tray



Note: Meat racks can be mounted on top rods and the charcoal trays can be spaced at any distance below the meat racks using the adjustable rack hangers

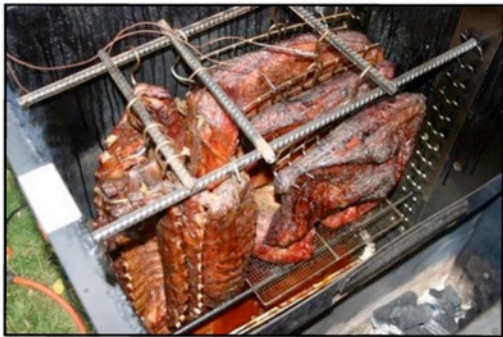
18.



Using the meat rack to cook over the firebox.



100 Turkey Legs

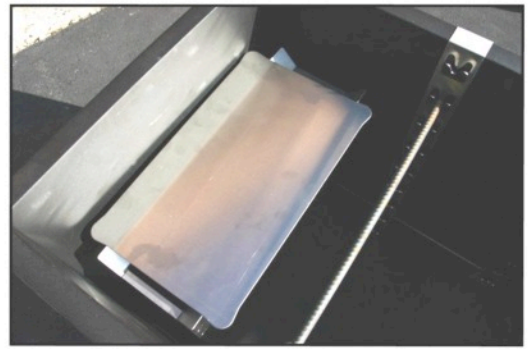


Ribs and Briskets & Butts



Serving Ribs in Vermont

19.



Using the optional griddle to cook over the firebox.



Serving Turkey Legs at a Rugby match



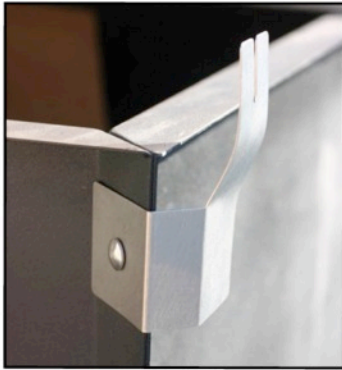
Ribs & Butts



Caldera Turkey

Attaching your Guru Control Mount to the Caldera Smoker

1.



Using a 1/4"-20 brass Thumb nut and 1/4"-20 x 1/2" carriage bolt, secure the Control Bracket as shown.

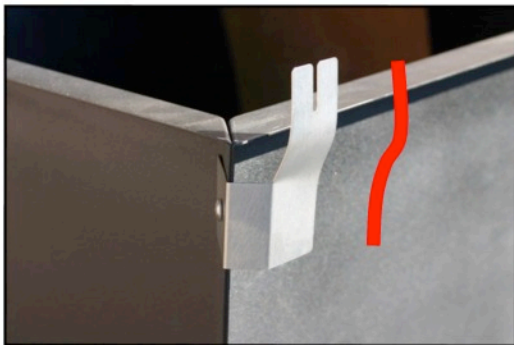


1/4"-20
Brass Thumb Nut



1/2"
Carriage Bolt

2.



Be sure to bend the bracket as shown to allow it to fit without coming into contact with your Caldera Lid.

3.



Slip Control base into groove and tighten wingnut.

4.



Competitor Control

You are now ready to cook with the BBQ Guru and The Caldera Smoker.



ProCom4 Control